

# Time Delay Relays – Delay on Release

## R61 Series



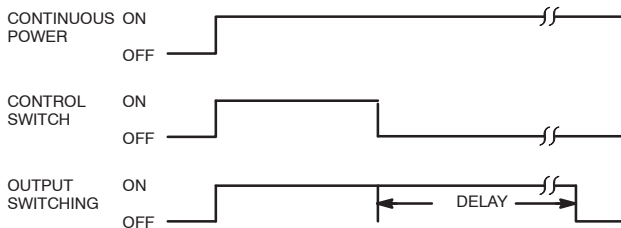
### Features

- Universal Input Voltage (U-suffix)
- 16 Time Ranges in Single Timer (0.05 sec. to 100 hrs.)
- User Sets Time Ranges  
No Math – Just Flip Switches
- Instructions Right on Unit
- Fine Tuning Knob for Precision Timing
- Pin for Pin Interchangeable with Timers in the Field – No Rewiring
- AC or DC Operation
- CMOS Digital Circuitry – 0.5% Repeatable Accuracy



### OPERATION

**DELAY ON RELEASE**– Input voltage must be applied continuously to operate the internal relay. When the control switch is closed, the relay energizes. When the control switch is opened, timing begins. When timing is complete, the relay will deenergize. Time may be reset to zero during timing by closing the control switch.



### AC or DC OPERATED

NTE Type No.	Nom. Voltage	Contact Arr.	Input Cur. Nom.	Max. Contact Cur. @ 28VDC or 120VAC	Diag No.
R61-11AD10-12	12VAC/DC	DPDT	167mA	10A	D36
R61-11AD10-24	24VAC/DC	DPDT	83mA	10A	D36
R61-11AD10-120	120VAC/DC	DPDT	17mA	10A	D36
<b>NEW</b> R61-11AD10-U	24 – 240VAC 12 – 125VDC	DPDT	–	10A	D36

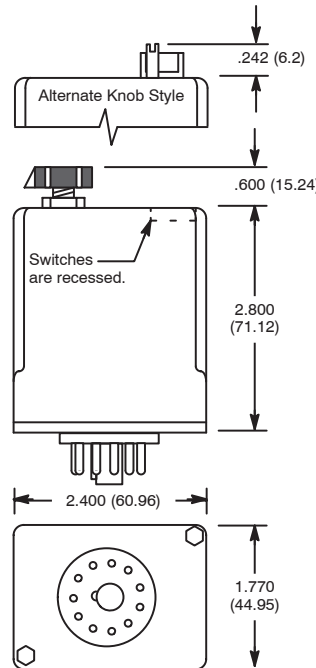
\* These devices are being phased out and replaced by the R61-11AD10-U.

### ACCESSORIES

MOUNTING STYLES	DESCRIPTION	NTE TYPE NO.
SURFACE MOUNT	11-PIN OCTAL	R95-104
PANEL MOUNT	11-PIN OCTAL	R95-119
DIN RAIL MOUNT	11-PIN OCTAL	R95-114
DIN RAIL MOUNT	11-PIN OCTAL	R95-182

Programmable, DPDT, 10 Amp, AC or DC, Delay On Release Time Delay Relays.

### D36

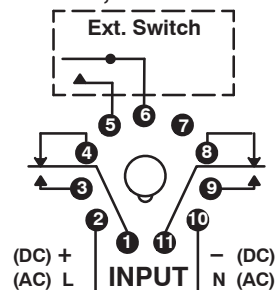


1234	Knob Style	TIME RANGE		
		Min	Max	
↑↑↑↑	A	0.1	0.25	Seconds
↑↑↑↑	B	0.15	0.5	
↑↑↑↑	C	0.3	1.0	
↑↑↑↑	D	0.5	2.0	
↑↑↑↑	E	1.0	4.0	
↑↑↑↑	F	2.0	8.0	
↑↑↑↑	G	4.0	15	
↑↑↑↑	H	8.0	30	
↑↑↑↑	I	15	60	
↑↑↑↑	J	30	120	
↑↑↑↑	K	1.0	4.0	Minutes
↑↑↑↑	L	2.0	8.0	
↑↑↑↑	M	4.0	15	
↑↑↑↑	N	8.0	30	
↑↑↑↑	O	15	60	
↑↑↑↑	P	30	120	

### Universal Type

Dial Setting	TIME RANGE		
	Min	Max	
A	0.05	0.5	Seconds
B	0.1	1	
C	0.5	5	
D	1	10	
E	3	30	
F	6	60	
G	0.2	2	Minutes
H	0.5	5	
I	1	10	
J	3	30	
K	6	60	
L	0.2	2	Hours
M	0.5	5	
N	1	10	
O	2.4	24	
P	10	100	

### DPDT, 2 Form "C"



## Electrical Specifications

### Contact

**Rating:** 10 Amps 240VAC or 30VDC, 1/3 HP, 240VAC or 120VAC

**Pilot Duty:** 345VA, 120VAC or 240VAC, 50/60Hz

**Life:** 500,000 (100,000 U-type) operations at full load

**Mechanical Life:** 7,000,000 (10,000,000 U-type) operations at no load

### Input

**Nominal input voltage:** See Chart

**Steady state input current:** See Chart

### Timing

**Timing adjustment modes available:** See Timing Range Chart

### Repeat Accuracy

± 0.5% – after established at steady temperature (4 hours)

**Timing tolerance at high end of range:** –0, +10%

**Timing tolerance at low end of range:** +0, –50%

**Reset Time:** 60 mS typ

### Environmental Characteristics

**Operating:** –20°C to +55°C